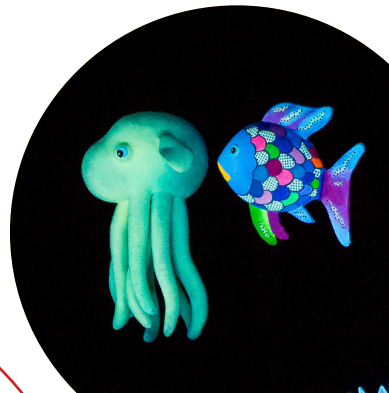




# 2023-2024 STUDENT MATINEES

The Lied Center's mission is to  
**EDUCATE, INSPIRE  
& ENTERTAIN**  
the people of Nebraska  
through the performing arts.



**2023-2024 STUDENT MATINEE**

# JAKE SHIMABUKURO

 **THU**  
**OCT 12**  
10:30 AM

 **LIED CENTER**  
MAIN STAGE

## **CURRICULUM CONNECTIONS:**

Music, Reading/Writing, Speaking/Listening, Language, Culture

**GRADE LEVELS:** 2 to 12

**LENGTH:** 60 minutes

Since 2000, Jake Shimabukuro has grown his seemingly limitless music vocabulary - playing jazz, rock, blues, bluegrass, folk and classical on the unlikelyst of instruments - the 'ukulele. This Hawai'i-born virtuoso has reinvented this small underappreciated four-string instrument, reaching the legendary reputation as "Jimi Hendrix of the 'ukulele." Both humble and good-natured, Jake picked up the 'ukulele at the age of four; a journey that took him from local phenom playing tiny clubs, to YouTube sensation. Shimabukuro's personal mission lies in connecting and inspiring young people through outreach in the communities he visits, sharing his story and passion for the ukulele and its heritage.



**2023-2024 STUDENT MATINEE**

# MERMAID THEATER OF NOVA SCOTIA'S RAINBOW FISH

 **TUE**  
**FEB 20**  
10:30 AM

 **LIED CENTER**  
MAIN STAGE

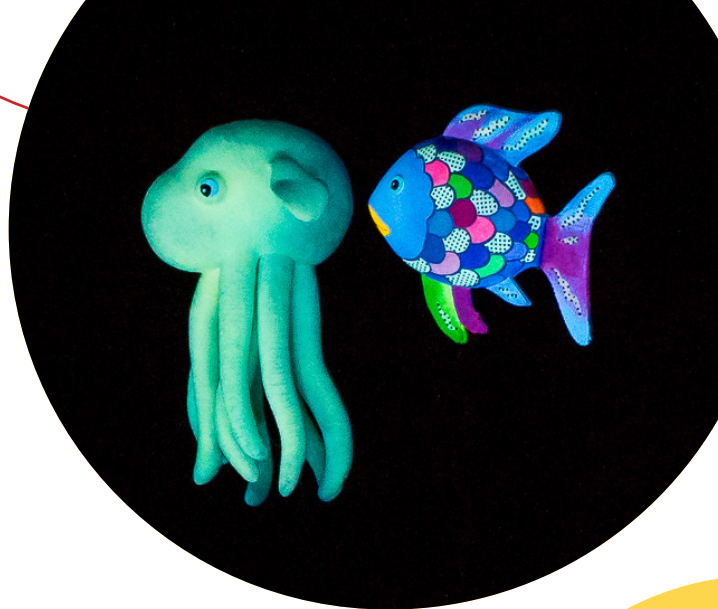
## **CURRICULUM CONNECTIONS:**

Puppetry, Visual Arts, Literature, Science/Ocean Life, Friendships/Relationship Skills

**GRADE LEVELS:** Pre-K to 3

**LENGTH:** 60 minutes (No intermission)

A children's picture book classic written by Marcus Pfister, *The Rainbow Fish* is a colorful story told through innovative puppetry, striking scenes, and original music. The lesson? A beautiful fish with iridescent scales learns to share his most prized possessions in order to gain treasured friendships. Other stories performed include *Rainbow Fish Discovers the Deep Sea* and *Opposites*. Mermaid Theatre of Nova Scotia brings *The Rainbow Fish* to life with their enchanting puppetry. Winner of many Children's theater awards, the sweet message of *The Rainbow Fish* has resonated with children, parents, teachers, librarians, and booksellers around the world.





**2023-2024 STUDENT MATINEE**

# **DRUM TAO**

## THE MARTIAL ART OF DRUMMING



**THU**  
**MAR 7**  
10:30 AM



**LIED CENTER**  
MAIN STAGE

### **CURRICULUM CONNECTIONS:**

Music/Percussion, Dance, History, Social Studies, Culture

**GRADE LEVELS:** 6 to 12

**LENGTH:** 60 minutes

Formed in 1993, this drum and dance ensemble combines music and dance to reflect Japanese traditions, but also incorporates Korean, Maori, and Indonesian influences. Some songs are traditional, though most are modern compositions created by members of the troupe. Japanese entertainment for a new generation, DRUM TAO's stage is created through spectacle performances using "taiko" drums and the beautiful melodies of Japanese flutes and harps. Many pieces include only percussion instruments, and in some cases only taiko drums, but other pieces include the shinobue, or Japanese flute, bamboo marimba, gongs, and the koto, a horizontal harp. The performers train in their own center in the Kuju Highlands on Kyushu called Grandioso. The strenuous physical demands of their performance style requires all performers to train as athletes.



**2023-2024 STUDENT MATINEE**

# SHOW WAY THE MUSICAL

 **THU**  
**MAR 27**  
10:30 AM

 **LIED CENTER**  
MAIN STAGE

## **CURRICULUM CONNECTIONS:**

Visual Art/Quilting, Music, Theater, Dance, History/Social Studies, Social Awareness, English/Literacy.

**GRADE LEVELS:** 3 to 12    **LENGTH:** 50 minutes *(No intermission)*

**NOTE:** This show includes a fog effect.

Jacqueline Woodson's award-winning story of history, love and resilience follows the stitches of a family's lineage. Soonie's great-grandma was 7 years old when she was sold to a big plantation with only some fabric and needles to call her own. She began to stitch a Show Way – a quilt with secret meanings – to show enslaved people the way to freedom. As each generation passes, the Show Way shines a light on the past and paves a road to the future, stitching together possibility and promise. **Jacqueline Woodson's** award-winning book/story of history, love, and resilience becomes a world premiere stage adaptation. This moving, lyrical account pays tribute to the women in Woodson's own family whose strength and knowledge illuminate their daughters' lives over seven generations.



# TEACHER WORKSHOPS & PROFESSIONAL DEVELOPMENT

CREATE is a week-long summer institute offered in late June or mid July, 2024 (TBD) for teachers interested in integrating the arts into their curriculum or teaching strategies. The course emphasizes teaching the arts – dance, music, theater, media and visual arts – across the curriculum and features national experts in the field, sampler demonstrations of arts integration in action, experienced professional teaching artists, local performances, and museum visits. Participants from across Nebraska are invited to attend and create arts integrated learning experiences using a project-based learning approach. We learn new assessment measures such as “single point assessment” or “single point rubric” and different arts integration strategies such as Tableau. The course is offered for undergraduate and graduate credit (3 credits) through UNL’s Department of Teaching, Learning and Teacher Education. The institute is part of the Lied Center’s Kennedy Center Partners in Education Program.

## FOR MORE INFORMATION ABOUT THE CREATE SUMMER INSTITUTE

PLEASE CONTACT

**NANCY ENGEN-WEDIN**

**NENGENWEDIN2@UNL.EDU | 402-472-4707**







# KENNEDY CENTER PARTNERS IN EDUCATION PROGRAM

## NEBRASKA'S KENNEDY CENTER PARTNERS IN EDUCATION PROGRAM

Since 2001, the Lied Center has collaborated with the Umo'ho<sup>n</sup> Nation School in Macy, Nebraska and with the University of Nebraska-Lincoln's College of Education and Human Sciences to develop ongoing professional development for K-12 teachers. A planning team develops a partnership agreement and program objectives annually and meets quarterly to set goals, plan activities, evaluate progress, and celebrate success. Research results were featured in a national publication as one of six success stories selected from more than 100 Kennedy Center Partnership teams.

The Kennedy Center Partners in Education Program assists arts organizations throughout the nation to develop and/or expand educational partnerships with their local school systems. The purpose of each partnership is to establish or expand professional development programs in the arts for all teachers. The program is based on the belief that educating teachers is an essential component of any effort designed to increase the artistic literacy of young people.

## K-12 TEACHERS AND TEACHING ARTIST WORKSHOPS

Classroom teachers, arts specialists and teaching artists may choose to participate in our summer institutes led by experienced teaching artists, including those affiliated with the Kennedy Center. Addressing K-12 national and state education standards in the arts and core subjects is an essential aspect of this approach.

## ARTS INTEGRATED TEACHING AND LEARNING

The arts are effective tools for teaching subjects such as social studies, math, science, media, and reading/language arts. Through this approach general classroom teachers and arts specialists learn how to engage students using arts integrated strategies, directly addressing school and students needs in literacy, computation, fluency as well as critical thinking or problem solving.

# PROGRAM SUPPORT:

**Partners  
in Education**



A KC Education Program

**PETER KIEWIT  
FOUNDATION**



NEBRASKA ARTS COUNCIL



**NEBRASKA  
CULTURAL  
ENDOWMENT**



**Umo'ho'n Nation  
School**



Dr. Phillip Engen

**FOR MORE INFORMATION ABOUT  
THE CREATE SUMMER INSTITUTE**

PLEASE CONTACT

**NANCY ENGEN-WEDIN**

**NENGENWEDIN2@UNL.EDU | 402-472-4707**





**LIED CENTER FOR PERFORMING ARTS**

301 North 12th St.  
P.O. Box 880151  
Lincoln, NE 68588-0151

Non Profit  
US Postage

**PAID**  
UNL

**TRANSFORMING LIVES THROUGH  
THE PERFORMING ARTS.**

